

PARTS LIST

Setting-up and Operating Instructions for

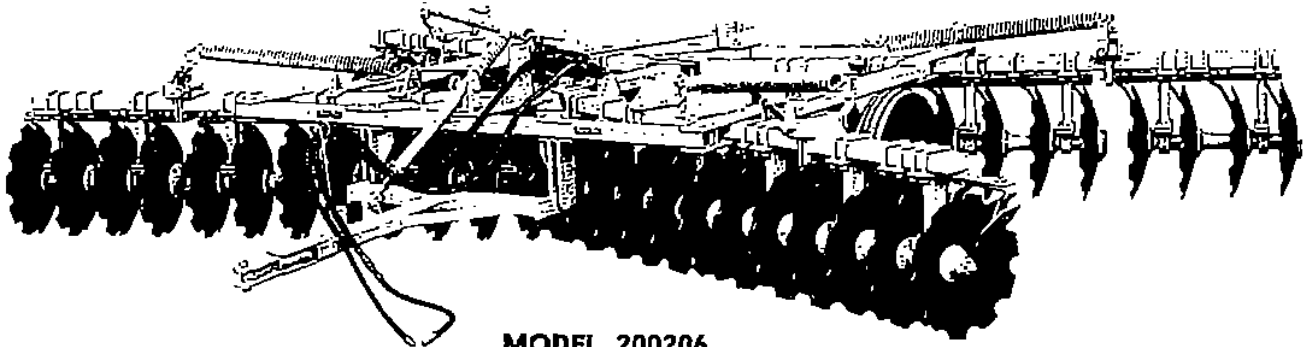
Taylor-Way
REG. U. S. PAT. OFF.

EXTRA HEAVY-DUTY WING-TYPE TANDEM HARROW

22" OR 24" DISCS

Model Number	Size of Wings	No. of Discs	Width of Cut	Approximate Weight		Suggested D.B.H.P.
				22"x $\frac{1}{4}$ " C.O.	24"x $\frac{1}{4}$ " C.O.	
200205	Basic Unit, Less Wings	32	13' 6"	5475	5685	90
200201	Basic Unit, With Three Disc Wings	44	18' 3"	6815	7095	120
200206	Basic Unit, With Four Disc Wings	48	19' 10"	7155	7465	130
200207	Basic Unit, With Five Disc Wings	52	21' 5"	7495	7835	140

SHIPPED WITH 14" OR 15" RIMS, TIRE AND HYDRAULIC CYLINDER NOT FURNISHED.



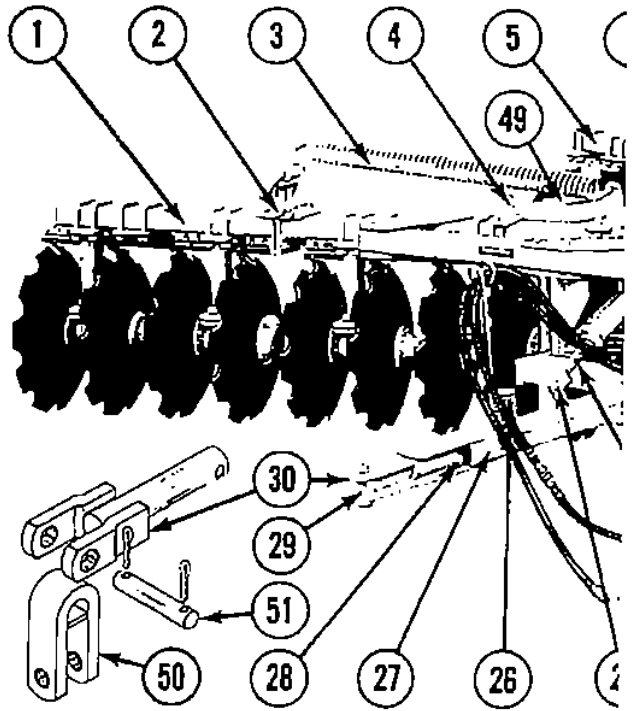
MODEL 200206

Taylor Implement Manufacturing Company

MANUFACTURERS

TRACTOR DRAWN **Taylor-Way** IMPLEMENTS
REG. U. S. PAT. OFF.

ATHENS, TENNESSEE 37303—TELEPHONE (AREA CODE 615) 745-3110



31 32 33 34

35 36 37 38

PLATE 2 — WHEEL AXLE AND DEPTI



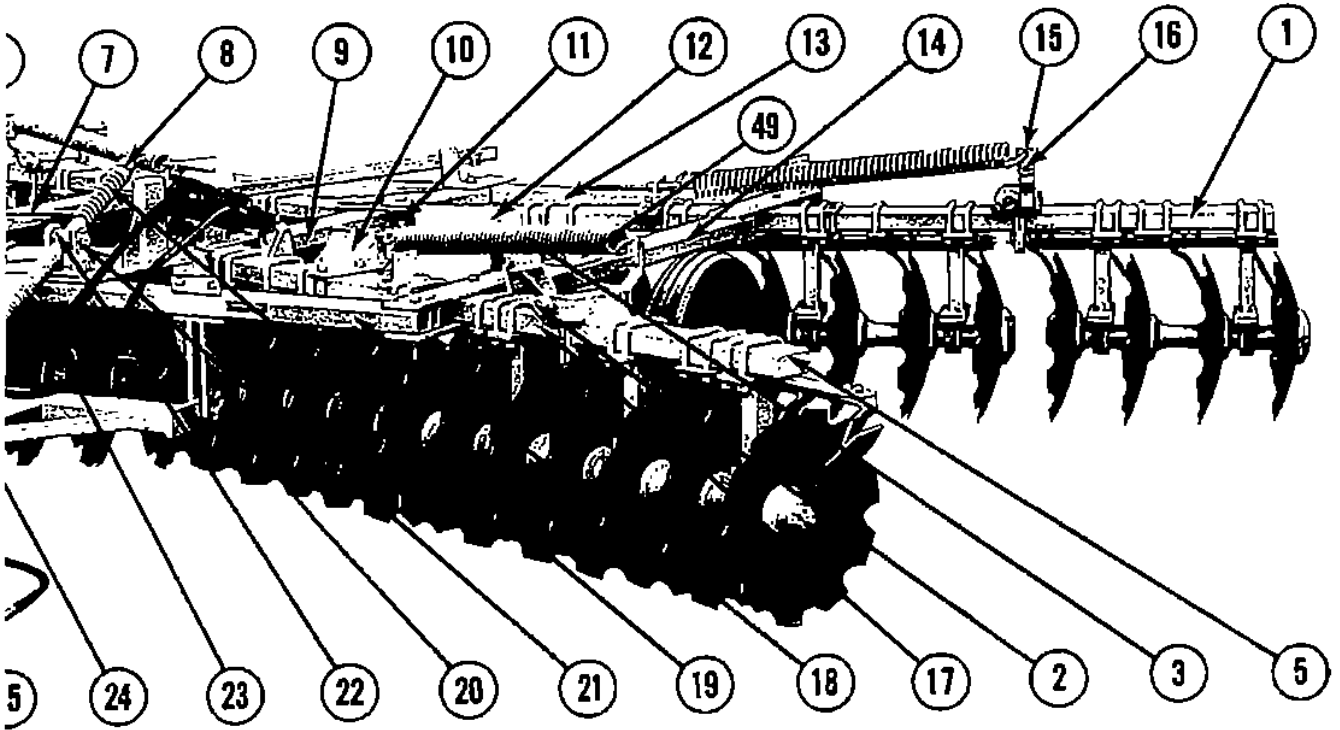
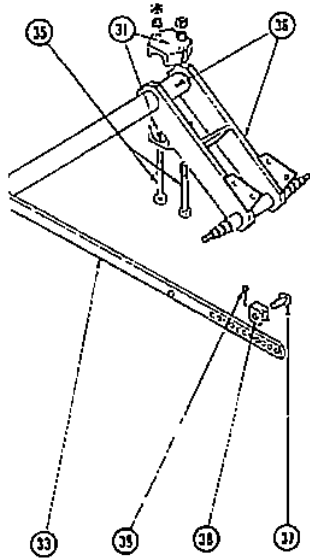
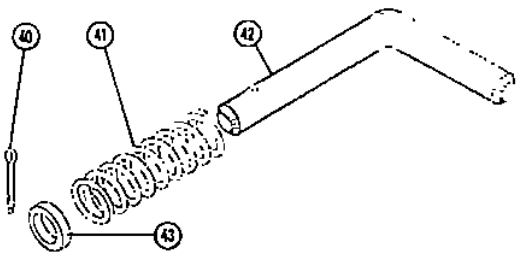


PLATE 1 — EXTRA HEAVY-DUTY WING-TYPE TANDEM HARROW



ADJUSTMENT ASSEMBLY



INTERNAL PARTS FOR WING SAFETY LATCH

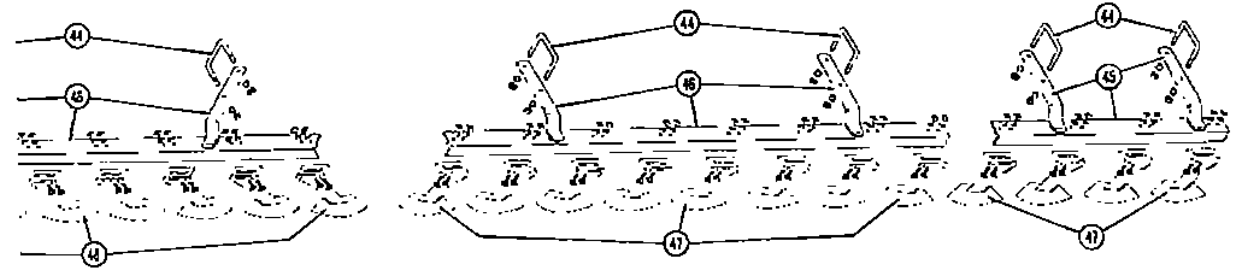


PLATE 3 — SCRAPER ASSEMBLY

Item No.	Part Number	FOR MODEL				Description	Size	Item No.	Part Number	FOR MODEL				Description	Size
		200 201	200 205	200 206	200 207					200 201	200 205	200 206	200 207		
1.	207235	2	0	0	0	Right Front or Left Rear 3-Disc Wing Gang Frame		23.	204364	1	1	1	1	Bottom Spring	
	206863	0	0	2	0	Right Front or Left Rear 4-Disc Wing Gang Frame			205163	1	1	1	1	Special Flat Washer	
	206865	0	0	0	2	Right Front or Left Rear 5-Disc Wing Gang Frame		24.	206808	1	1	1	1	Spring Rod Adjustment	
2.	206862	4	0	4	4	Wing Connector Pin		25.	203100	1	1	1	1	Spring Rod Pin	
		4	0	4	4	Cotter	3/8"x2"			2	2	2	2	Cotter	5/16"x1 1/2"
3.	206841	4	0	4	4	Extension Spring		26.	206553	1	1	1	1	Hose Holder	
4.	206868	4	0	4	4	Bumper				1	1	1	1	Bolt w/Nut	5/8"x4"
	206933	4	0	4	4	U-Bolt w/Nuts				1	1	1	1	Lock Washer	5/8"
		8	0	8	8	Lock Washer	3/4"			2	2	2	2	Flat Washer	5/8"
	207235	2	0	0	0	Left Front or Right Rear 3-Disc Wing Gang Frame		27.	206641	1	1	1	1	Tongue	
5.	206854	0	0	2	0	Left Front or Right Rear 4-Disc Wing Gang Frame		28.	206640	1	1	1	1	Swivel Collar	
	206867	0	0	0	2	Left Front or Right Rear 5-Disc Wing Gang Frame				1	1	1	1	Bolt w/Nut	3/4"x4"
										1	1	1	1	Lock Washer	3/4"
6.	206876	2	0	2	2	Eye Bolt Connector Bracket; Right Front or Left Rear		29.	206123	1	1	1	1	Clevis Bolt w/Nut and Cotter	
	206833	2	0	2	2	U-Bolt w/Nuts		30.	207874	1	1	1	1	Swivel Clevis	
		4	0	4	4	Lock Washer	3/4"	31.	207010	6	6	6	6	Wheel Axle Bearing	
7.	206872	4	0	4	4	Eye Bolt			207145	2	2	2	2	Plate	
		8	0	8	8	Nut	3/4"			3	3	3	3	Alemite, Drive-in	1/8"
		4	0	4	4	Lock Washer	3/4"	32.	207141	2	2	2	2	Hydraulic Cylinder Bracket	
8.		1	1	1	1	Nut	1 3/8"	33.	206671	1	1	1	1	Depth Bar Control	
9.	207864	1	1	1	1	Center Frame		34.	204215	1	1	1	1	Depth Bar Connector Pin	
		2	2	2	2	Bolt w/Nut	3/4"x4 1/2"			2	2	2	2	Cotter	5/16"x1 1/2"
		4	4	4	4	Bolt w/Nut	3/4"x5 1/2"	35.		6	6	6	6	Bolt w/Nut, High Tensile	3/4"x9"
		6	6	6	6	Lock Washer	3/4"			6	6	6	6	Lock Washer	3/4"
10.	206873	2	0	2	2	Eye Bolt Connector Bracket; Left Front or Right Rear		36.	207868	1	1	1	1	Wheel Axle	
11.	206758	4	4	4	4	Gang Connector Bolt	7/8"x6 1/2"	37.	203058	1	1	1	1	Depth Adjustment Pin	
		4	4	4	4	Hex Slotted Nut	7/8"	38.	204683	1	1	1	1	Depth Adjustment Cuff	
		4	4	4	4	Cotter	3/16"x1 1/2"	39.	205831	1	1	1	1	Special Cotter	
	206696	4	4	4	4	Gang Connector Bushing		40.		4	4	4	4	Cotter	5/32"x1 1/2"
12.	206848	2	2	2	2	Rear Gang Frame		41.	403177	4	4	4	4	Spring	
13.	206667	1	1	1	1	Rear Cross Frame		42.	207358	4	4	4	4	Keeper	
		1	1	1	1	Bolt w/Nut	3/4"x5 1/2"	43.	207200	4	4	4	4	Washer	
		1	1	1	1	Lock Washer	3/4"	44.	206833	16	8	16	16	U-Bolt w/Nuts	3/4"
14.	206650	2	2	2	2	Side Frame				16	8	16	16	Lock Washer	3/4"
		20	20	20	20	Bolt w/Nut	3/4"x5 1/2"		207838	2	0	0	0	3-Disc Wing Scraper Bar, Right	
		20	20	20	20	Lock Washer	3/4"		207841	2	0	0	0	3-Disc Wing Scraper Bar, Left	
15.	206871	4	0	4	4	Spring Hinge		45.	207660	0	0	4	0	4-Disc Wing Scraper Bar	
16.	204021	4	0	4	4	Spring Hinge Pin			207782	0	0	0	4	5-Disc Wing Scraper Bar	
		4	0	4	4	Cotter	5/16"x1 1/2"	46.	207663	4	4	4	4	8-Disc Scraper Bar	
17.	206844	2	2	2	2	Front Gang Frame		47.	207600	22	32	48	52	Right Scraper (Max. Quantities Shown)	
18.	206649	1	1	1	1	Front Cross Frame				44	64	96	104	Carriage Bolt w/Nut	1/2"x2"
19.	206612	1	1	1	1	Top Spring				44	64	96	104	Flat Washer	1/2"
	205163	1	1	1	1	Special Flat Washer				44	64	96	104	Lock Washer	1/2"
20.	206666	2	2	2	2	Tongue Connector Pin		48.	207603	22	32	48	52	Left Scraper (Max. Quantities Shown)	
		4	4	4	4	Cotter	3/8"x2"			44	64	96	104	Carriage Bolt w/Nut	1/2"x2"
21.	203748	2	2	2	2	Shoulder Bolt				44	64	96	104	Flat Washer	1/2"
		2	2	2	2	Lock Washer	7/8"			44	64	96	104	Lock Washer	1/2"
22.	203742	1	1	1	1	Spring Rod Slide		49.	207145	2	2	2	2	Plate	
		1	1	1	1	Alemite	1/8"	50.	207871	1	1	1	1	Clevis	
								51.	207421	1	1	1	1	Pin	
										2	2	2	2	Cotter	3/8"x2"

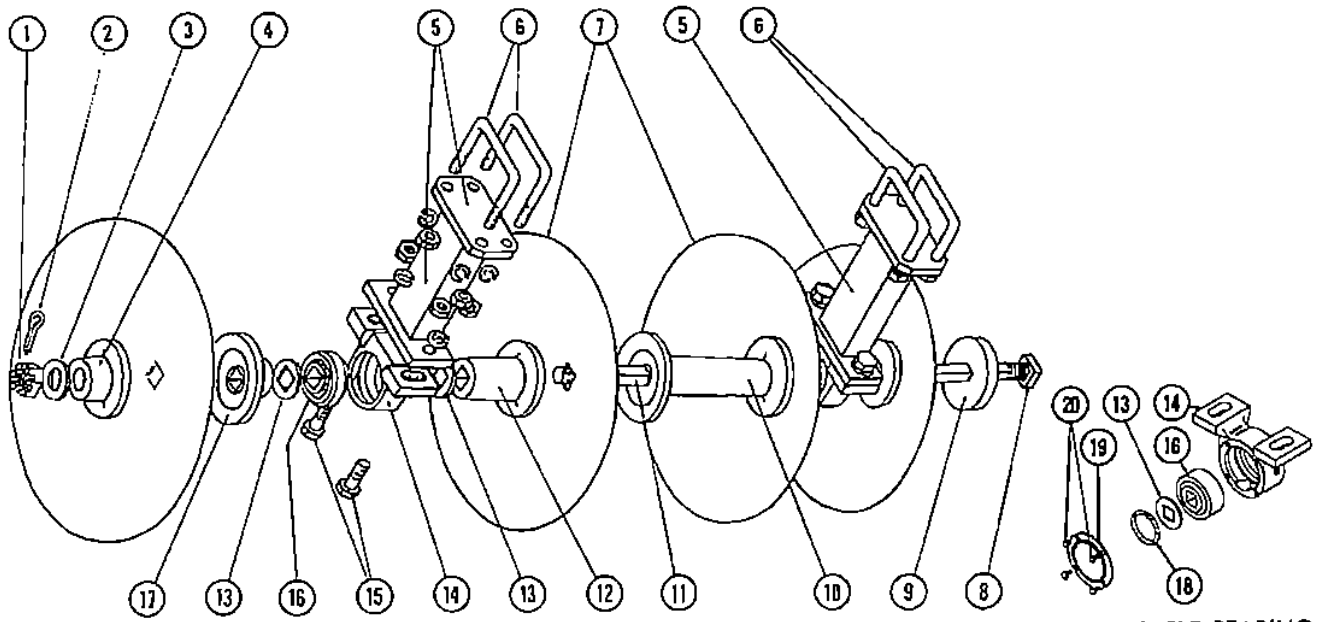


PLATE 4 — DISC GANG ASSEMBLY

REGREASABLE BEARING

Item No.	Part Number	FOR MODEL				Description	Size	Item No.	Part Number	FOR MODEL				Description	Size
		200 201	202 203	204 205	206 207					200 201	202 203	204 205	206 207		
1.		12	8	12	12	Hex Slotted Nut	1 1/2"	12.	206631	24	16	24	24	Medium Spacer, Convex	
2.		12	8	12	12	Cotter	5/16"x3"	13.	204330	48	32	48	48	Special Washer	
3.		12	8	12	12	Washer	1 1/2"	14.	204684 207020	24	16	24	24	Bearing Holder, Standard Bearing Holder, Regreaseable	
4.	204438	12	8	12	12	End Washer				24	16	24	24	Alemite, Straight, Drive-in	1/8"
5.	206682	24	16	24	24	Bearing Connector		15.		48	32	48	48	Bolt w/Nut	7/8"x2 3/4"
6.	206328	48	32	48	48	U-Bolt w/Nuts	3/8"			48	32	48	48	Lock Washer	7/8"
7.	205024	44	32	48	52	22" x 1/4" Cut-Out Disc		16.	204679	24	16	24	24	Ball Bearing, Standard	
	204006	44	32	48	52	24" x 1/4" Cut-Out Disc			207022	24	16	24	24	Ball Bearing, Regreaseable	
	205025	44	32	48	52	22" x 1/4" Round Disc		17.	206630	24	16	24	24	Short Spacer, Concave, Used on models equipped with Standard Ball Bearings. Part No. 204679.	
	204009	44	32	48	52	24" x 1/4" Round Disc			204437	24	16	24	24	Short Spacer, Concave, Used on models equipped with Regreaseable Ball Bearings Part No. 207022.	
8.		12	8	12	12	Square Nut	1 1/2"								
9.	206765	12	8	12	12	Butt-Plate									
10.	207348	8	8	12	16	Long Double End Spacer									
11.	206605	4	0	0	0	3-Disc Axle		18.	207863	48	32	48	48	1/4" Twisted Graphite Packing	
	206634	8	8	12	0	4-Disc Axle, 36 9/16" Long		19.	207789	48	32	48	48	Seal Cap	
	206635	0	0	0	4	5-Disc Axle, 46 9/16" Long		20.	207862	192	128	192	192	Tapping Screw	1/4"

Item No.	Part Number	FOR MODEL				Description	Size
		200 201	202 203	204 205	206 207		
1.	205993	4	4	4	4	14" Wheel for Rubber	
	205992	4	4	4	4	15" Wheel for Rubber	
2.	403817	24	24	24	24	Lug Bolt	
3.	204515	4	4	4	4	Wheel Hub w/Two Cups	
4.	204523	4	4	4	4	Hub Cap	
5.	204522	4	4	4	4	Bearing Adjustment Nut	
		4	4	4	4	Cotter	5/32"x1 1/2"
6.	204521	4	4	4	4	Special Flat Washer	
7.	204524	4	4	4	4	Bearing Cone	
8.	203021	4	4	4	4	Bearing Cup	
9.	204526	4	4	4	4	Bearing Cone	
10.	204525	4	4	4	4	Bearing Cup	
11.	204527	4	4	4	4	Grease Seal	
12.	206443	2	2	2	2	Stub Axle (Sub Assembly for Wheel Axle, Part No. 207138, Item 36, Plate 1).	
13.	204520	4	4	4	4	Dust Collar	

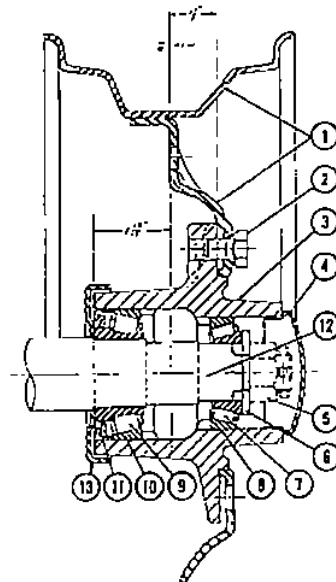


PLATE 5 — WHEEL HUB ASSEMBLY

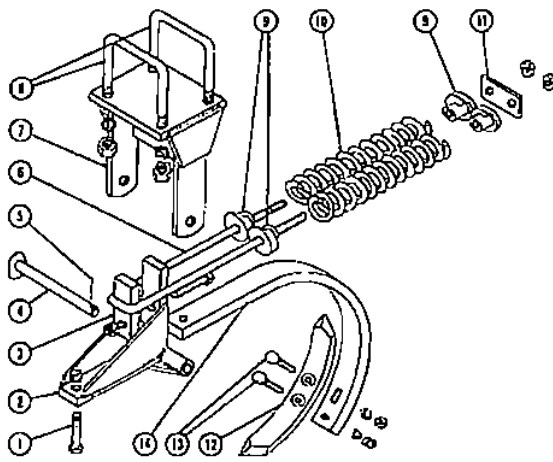


PLATE 6 — BALK BREAKER
ATTACHMENT — MACH. NO. 299046

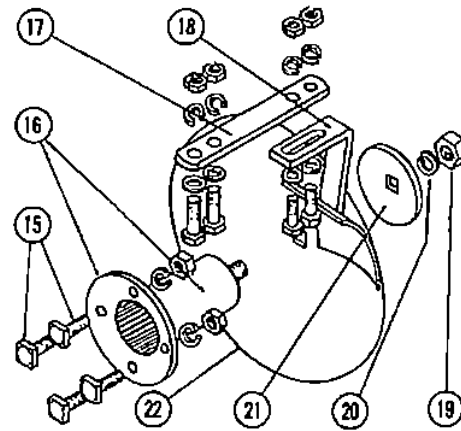


PLATE 7 — FURROW FILLER
ATTACHMENT — MACH. NO. 200086

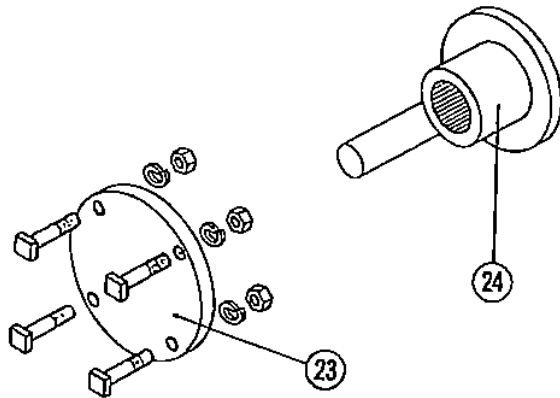


PLATE 8 — GANG COUPLER
MACHINE NUMBER 200093

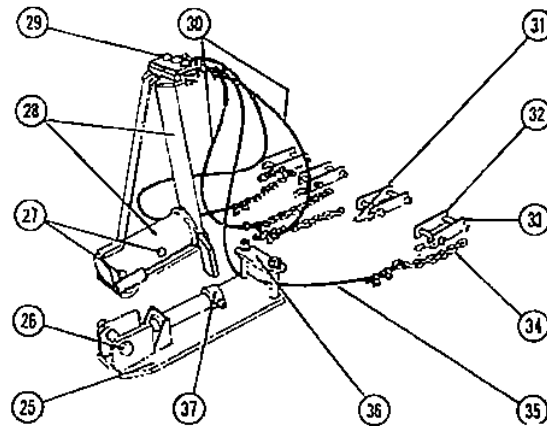


PLATE 9 — M-F PRESSURE CONTROL
ATTACHMENT — MACH. NO. 299047

Item No.	Part Number	FOR MODEL				Description	Size	Item No.	Part Number	FOR MODEL				Description	Size
		200 201	200 205	200 206	200 207					200 200	200 201	200 205	200 206		
1.		2	2	2	2	Bolt	3/8" x 2 3/4"	21.	207021	2	2	2	2	Furrow Filler Butt Plate	
		2	2	2	2	Lock Nut	3/8"	22.	205003	2	2	2	2	18" Round Disc	
2.	207496	1	1	1	1	Shank Hinge Assembly			204004	2	2	2	2	20" Round Disc	
3.	207498	1	1	1	1	Upright		23.	207323	4	4	8	8	Butt Plate Driver	
4.	206607	1	1	1	1	Hinge Pin				16	16	32	32	Machine Bolt w/Nut	1/2" x 2 1/4"
5.		1	1	1	1	Cotter	5/16" x 1 1/2"			16	16	32	32	Lock Washer	1/2"
6.	603012	1	1	1	1	U-Bolt w/Nuts	3/8"	24.	207318	4	4	8	8	End Washer Drive	
7.	207503	1	1	1	1	Bulk Breaker Anchor Assy.		25.	207475	1	1	1	1	Adaptor Plate	
8.	206328	2	2	2	2	U-Bolt w/Nuts	3/8"			2	2	2	2	Bolt w/Nut	3/8" x 6 1/2"
		4	4	4	4	Lock Washer	3/8"			2	2	2	2	Lock Washer	3/8"
9.	603009	4	4	4	4	Spring Cap		26.		1	1	1	1	Bolt w/Nut	1" x 5"
10.	603011	2	2	2	2	Compression Spring				1	1	1	1	Lock Washer	1"
11.	603059	1	1	1	1	Strap		27.		2	2	2	2	Bolt w/Nut	3/4" x 5 1/2"
12.	206727	1	1	1	1	Chisel				2	2	2	2	Lock Washer	3/4"
13.		2	2	2	2	Flow Bolt w/Nuts.		28.	207476	1	1	1	1	Cone Adapter	
						High Tensile	7/16" x 2 1/4"	29.	403808	3	3	3	3	Button Head Rivet	
		2	2	2	2	Lock Washer	7/16"		205831	3	3	3	3	Special Cotter	
14.	207434	1	1	1	1	10" Shank		30.	207477	1	1	1	1	Center Cable	
15.		8	8	8	8	Bolt w/Nut	1/2" x 2"			1	1	1	1	Wire Rope Thimble	3/8"
		8	8	8	8	Lock Washer	1/2"			6	6	6	6	Cable Clip w/Nuts	3/8"
16.	206834	2	2	2	2	Furrow Filler Spacer		31.		4	4	4	4	Clevis Hook, Grab	5/16"
17.	207137	2	2	2	2	Furrow Filler Scraper Bar		32.	207478	4	4	4	4	Bottom Strap	
		4	4	4	4	Bolt w/Nut	1/2" x 2"	33.	207479	4	4	4	4	Top Strap	
		4	4	4	4	Flat Washer	1/2"			8	8	8	8	Bolt w/Nut	3/4" x 5"
		4	4	4	4	Lock Washer	1/2"			8	8	8	8	Lock Washer	3/4"
18.	203575	1	1	1	1	Left Scraper for Right Rear		34.	403746	4	4	4	4	Adjustment Chain	
	203578	1	1	1	1	Right Scraper for Left Rear		35.	207480	2	2	2	2	Outside Cable	
		4	4	4	4	Bolt w/Nut	1/2" x 2"			2	2	2	2	Wire Rope Thimble	3/8"
		4	4	4	4	Flat Washer	1/2"			8	8	8	8	Cable Clip w/Nuts	3/8"
		4	4	4	4	Lock Washer	1/2"	36.	206899	1	1	1	1	Strap	
19.		2	2	2	2	Nut	1 1/8"	37.						Not Furnished	
20.		2	2	2	2	Lock Washer	1 1/8"							(See Item Number 28, Page 3)	

SETTING-UP INSTRUCTIONS

Extra Heavy-Duty Wing-Type Tandem Harrow

MODELS 200205-207

General

Right and left are determined by standing at the rear of the harrow. All items designated as right and left fit into their respective positions on the front section. When used on the rear section, the procedure is reversed and items designated as right will fit on the left side and vice versa.

These harrows are shipped "knocked down" and are handled into ten bundles for the basic harrow and six additional bundles for the wings consisting of the following:

Bundle Number	Bundles Req'd.				Description
	200 201	200 205	200 206	200 207	
200908	1	1	1	1	Tongue Bundle
201147	1	1	1	1	Tongue Bundle w/Special Clevis (Optional)
200909	1	1	1	1	Front and Rear Cross Frames
201069	1	1	1	1	Center Frame Bundle
200911	1	1	1	1	Side Frames
201151	1	1	1	1	Wheel Axle Bundle w/Hubs
200595	4	4	4	4	14" Rims*
200596	4	4	4	4	15" Rims*
201152	1	1	1	1	Right Front 8-Disc Gang Frame
201153	1	1	1	1	Left Front 8-Disc Gang Frame
201154	1	1	1	1	Right Rear 8-Disc Gang Frame
201155	1	1	1	1	Left Rear 8-Disc Gang Frame
201124	1	0	0	0	Right Front 3-Disc Wing Gang Frame
201125	1	0	0	0	Left Front 3-Disc Wing Gang Frame
201126	1	0	0	0	Right Rear 3-Disc Wing Gang Frame
201099	1	0	0	0	Left Rear 3-Disc Wing Gang Frame
201156	0	0	1	0	Right Front 4-Disc Wing Gang Frame
201157	0	0	1	0	Left Front 4-Disc Wing Gang Frame
201158	0	0	1	0	Right Rear 4-Disc Wing Gang Frame
201159	0	0	1	0	Left Rear 4-Disc Wing Gang Frame
201160	0	0	0	1	Right Front 5-Disc Wing Gang Frame
201161	0	0	0	1	Left Front 5-Disc Wing Gang Frame
201162	0	0	0	1	Right Rear 5-Disc Wing Gang Frame
201163	0	0	0	1	Left Rear 5-Disc Wing Gang Frame
201164	1	0	1	1	Wing Spring Bundle

* Denotes Optional Rims

If implements are ordered with extra equipment these bundles will be shipped as shown below.

Extra Equipment

Machinery No. 299046—Balk Breaker Attachment
 Machinery No. 299047—M-F Pressure Control Attachment
 Machinery No. 200085—Furrow Filler Attachment, Less Discs
 Furrow Filler Attachment with 18" Round Discs
 Furrow Filler Attachment with 20" Round Discs
 All with or without scrapers
 Machinery No. 200093—Gang Coupler (When shipped assembled with implement included in gang bundles).

Bundle Number	Bundles Required				Description
	299 046	299 047	200 085	200 086	
201033	1	0	0	0	Balk Breaker Attachment
201054	0	0	1	0	Gang Coupler
201032	0	0	0	1	Scrapers for Furrow Filler, Optional
201064	0	0	0	1	Furrow Filler Attachment, Less Discs
201065	0	0	0	1	Furrow Filler Attachment, w/18" Rd. Discs
201066	0	0	0	1	Furrow Filler Attachment, w/20" Rd. Discs
201030	0	1	0	0	Tongue Attachment Bundle
201031	0	1	0	0	Cable Bundle

Basic Harrow Assembly

Remove all bundling wire and proceed as follows:

1. Position the Right and Left Front Gang Assemblies (Item 17, Plate 1; Plate 4) so they will be in their approximate position as shown in Plate 1. Block up the assemblies so they will be in an upright position. Remove the Gang Bolts and Bushings (Item 11, Plate 1) and attach the ends of each Front Gang Assembly onto the brackets provided on the Center Frame (Item 9, Plate 1). Secure with the Gang Bolts and Bushings previously removed.

2. Set the Right and Left Rear Gang Assemblies (Item 12, Plate 1; Plate 4) in position as described above and secure to the Center Frame as shown on Plate 1.
3. Remove the five bolts in each end of the Side Frames (Item 14, Plate 1) and slide each end of the Side Frames over the Gang Frames (Items 12 & 17, Plate 1) with the Wheel Axle Bearings (Item 31, Plate 2) down and forward. To accomplish this, rotate the Gang Frames in or out so the Side Frames can slide into position. After the Side Frames have been placed into position, close in the Gang Frame Assemblies as much as possible.
4. Remove the bolts in the front of the Center Frame and insert the Front Cross Frame (Item 18, Plate 1) as shown. Align all holes in the Front Cross Frame with the holes in the Center Frame and Side Frames. Bolt into position but do not tighten the bolts.
5. Remove the bolt in the Rear Cross Frames (Item 13, Plate 1) and attach the Rear Cross Frame onto the Center Frame and Side Frames as shown. Bolt into position but do not tighten the bolts.
6. Remove the Wheel Axle Bearings (Item 31, Plate 2) from the Side Frames and Center Frame. Position the Wheel Axle Assembly (Item 36, Plate 2; Plate 5) under the Side Frames and Center Frame and secure in place with the Wheel Axle Bearings and bolts provided.
7. Remove the two Pins (Item 20, Plate 1) from the tongue connector brackets of the Center Frame and pin the Tongue (Item 27, Plate 1) into position at these points with the spring rod connector bracket on top of the Tongue. Pin the Spring Rod Assembly onto the Tongue with the Pin (Item 25, Plate 1) as shown. Secure the top of the Spring Rod Assembly to the top of the Center Frame as shown with the two Shoulder Bolts (Item 21, Plate 1).
8. Remove the Pin (Item 34, Plate 2) and the Depth Adjustment Cuff, Pin, and Cutter (Items 37-39, Plate 2). Place the rear of the Depth Adjustment Bar through the opening provided at the rear of the Center Frame. Connect the front of the Depth Adjustment Bar to the bracket provided on the Wheel Axle and secure with the Pin and Cutters provided. Replace the Depth Adjustment Cuff, Pin and Cutter on the Depth Adjustment Bar behind the opening provided on the rear of the Center Frame.
9. Shift the Front and Rear Gang Assemblies until the desired amount of angle is reached in each gang. Both Front Gang Assemblies should have the same amount of angle and both Rear Gang Assemblies should have the same amount of angle. Tighten the Gang Assemblies into position with the $\frac{1}{4}$ " x $5\frac{1}{2}$ " bolts by placing one bolt through the holes provided in the Side Frames and behind the Gang Frames.
10. Adjust all Scrapers, mount Wheels and tighten all bolts. Grease harrow at all Alemite fittings.

Wing Assembly

1. Remove the Wing Connector Pin (Item 2, Plate 1) and the two $\frac{1}{4}$ " nuts from each Wing Gang Frame (Items 1 & 5, Plate 1). Place the Wing Assemblies in their respective positions and pin into position with the Wing Connector Pins.
2. Place one end of the Extension Spring (Item 3, Plate 1) through the Spring Hinge (Item 15, Plate 1). Remove the outside nut and lock washer from the Eye Bolt and insert the Eye Bolt into the hole provided in the Eye Bolt Connector Bracket (Item 6, Plate 1) with the eye to the outside of the harrow. Connect the loose end of the Extension Spring to the Eye Bolt and secure the Eye Bolt to the Eye Bolt Connector Bracket with the nut and lock washer previously removed. This procedure applies for all four Wing Assemblies.
3. Adjust the tension in the Extension Springs with the Eye Bolts until the Wing Assemblies can be raised and lowered easily. If necessary the Eye Bolt Connector Brackets may be moved in or out on the Gang Frames as required.
4. Replace the nuts and washers on the bolts extending out from the Wing Gang Frames. Adjust the Scrapers and tighten all bolts.

ATTACHMENTS

Gang Coupler Attachment

Machinery Number 200093

1. Remove Bundling Wire and Bolts from Butt Plate Driver (Item 23, Plate 8).

2. Remove the Cotter, Nut, Washer and End Washer (Items 1, 2, 3, and 4, Plate 4). Discard the End Washer (Item 4, Plate 4). When installing the Gang Couplers on the Front Gangs, always start at the left and work to the right. On the Rear Gangs, always start at the right and work to the left.
3. Secure the Butt Plate Driver (Item 23, Plate 8) to the Butt Plate (Item 9, Plate 4) with the bolts provided. Center the Butt Plate Driver on the Butt Plate and tighten the four bolts evenly.
4. Push the end of the axle back and install the coupler (Item 24, Plate 8) in the position where the End Washer was previously removed. The Rod on the coupler should be placed between the two drive ears on the Butt Plate Driver in the narrowest position.
5. Reinstall washer and nut (Items 1, 2, & 3, Plate 4) that were previously removed. Retighten the nut to a minimum of 1,000 lb.-ft. of torque. Reinstall cotter.
6. Repeat above procedure for all remaining couplers.

M-F Pressure Control Attachment

Machinery Number 299047

Remove the Swivel Clevis (Item 30, Plate 1) and the Swivel Collar (Item 28, Plate 1) from the Tongue (Item 27, Plate 1). Remove the two bolts securing the strap (Item 36, Plate 9) to the Adapter Plate (Item 25, Plate 9). Mount the Adapter Plate under the Tongue so that the long pin located on the top front of the adapter plate will fit into the same position as the swivel clevis previously removed. Replace the swivel collar and bolt formerly used to hold the swivel clevis. Place the strap (Item 36, Plate 9) on top of the tongue and secure with the bolts previously removed. Tighten these bolts securely. Remove the bolt (Item 26, Plate 9) and mount the Cone Adapter (Item 28, Plate 9) on top of the tongue and adapter plate. Replace the bolt previously removed passing it through the loop on the bottom front of the Cone Adapter.

Mount two of the hooks and straps (Items 31, 32, and 33, Plate 9) on the cross bar of the tongue approximately 10" from each end with the hooks on top and to the front. Mount the other two hooks and straps on the rear cross frame (Item 13, Plate 1) approximately 15" from each end of the rear cross frame, measured from the inside edge of the side frames.

Install the short center cable (Item 30, Plate 9) in the top of the

Cone Adapter, using the center Rivet (Item 29, Plate 9). Install the two long cables (Item 35, Plate 9) in the adapter using the two outside rivets. Hook the chains on the center cable in the hooks on the cross bar of the tongue. Hook the chains on the long cables in the hooks on the rear cross frame. Usually, the short cable is hooked as short as possible. After the pressure is applied, the long cables are adjusted to get the desired performance from the harrow. However, both sets of cables can be adjusted if necessary. *Always have the two front chains and the two rear chains hooked the same length.*

Balk Breaker Attachment

Machinery Number 299046

Remove the two U-Bolts (Item 8, Plate 6) from the Balk Breaker Connector (Item 7, Plate 6). Mount the Balk Breaker Attachment on the Center Frame (Item 9, Plate 1) directly behind the Wheel Axle Bearings (Item 31, Plate 2) and secure in place with the two U-Bolts previously removed.

Furrow Filler Attachment

Machinery Number 200086

Remove the four ½" x 2" Bolts (Item 15, Plate 7) from each Furrow Filler Spacer (Item 16, Plate 7). Mount the Furrow Filler Spacers onto the Butt-Plates (Item 9, Plate 4) on the outside rear of the harrow. To mount the Furrow Filler Spacers insert the heads of the ½" x 2" Bolts into the four slots provided on the outside of each Butt-Plate and secure the Furrow Filler Spacers to the Butt-Plates. Mount the Discs (Item 22, Plate 7) onto the Furrow Filler Spacers and tighten into position, using the Furrow Filler Butt-Plates, Lock Washers and Nuts (Items 19-21, Plate 7) provided. Any Disc with a ¾" Square Center Hole can be used. For best results, use a Disc that is 4"-6" smaller than the Discs on the harrow. To mount the Furrow Filler Scrapers (Item 18, Plate 7) onto the harrow, remove the outside Scrapers (Items 47 & 48, Plate 3) on the outside rear of the harrow and mount the Furrow Filler Scraper Bars (Item 17, Plate 7) onto the Scraper Bars (Items 45 & 46, Plate 3) with the sides with three holes to the inside. Use the second and third holes to attach the Furrow Filler Scraper Bars. Tighten into position with the Scrapers previously removed. Attach the Furrow Filler Scrapers (Item 18, Plate 7) to the Furrow Filler Scraper Bars, adjust and tighten all bolts.

OPERATING INSTRUCTIONS

Extra Heavy-Duty Wing-Type Tandem Harrow

Front to Rear Leveling

To level the harrow from front to rear, use the Spring Adjusting Rod (Item 24, Plate 1). Loosen the 1¼" Nut (Item 8, Plate 1) so that no pressure is exerted on the Top Spring (Item 19, Plate 1) when the harrow is down and in its plowing position. With the Top Spring loose, tighten the Bottom Spring (Item 23, Plate 1) by screwing up on the Wing Nut located on the Spring Adjusting Rod to increase the cutting depth of the rear section. To decrease the cutting depth of the rear section, loosen the Bottom Spring by screwing down on the Wing Nut. After the cutting depth has been adjusted, lift the harrow to its transport position and tighten the Top Spring by screwing down on the 1¼" Nut located on top of the Spring Adjusting Rod until the harrow is approximately level.

If the Tongue (Item 27, Plate 1) needs to be adjusted to compensate for the draw bar height of the tractor, remove the two Pins (Item 20, Plate 1) securing the Tongue to the Center Frame (Item 9, Plate 1) and move the Tongue up or down as required.

Depth of Cut

The depth of cut is controlled by the use of a ASAE standard 8" stroke single or double action Hydraulic Cylinder with a 3½" or larger bore or by use of the Depth Adjustment Bar, Cuff, Pin and Cotter (Items 37-39, Plate 2). To adjust the depth of cut using the Depth Adjustment Bar, remove the Depth Adjustment Pin and Cotter and slide the Depth Adjustment Cuff forward to decrease the depth of cut, and to the rear to increase the depth of cut. For transport, move the Depth Adjustment Cuff to the foremost hole. Never pin the Depth Adjustment Cuff in front of the side which the Depth Adjustment Bar travels through on the rear of the harrow. Also, do not place a wedge or any other object between the rear Hydraulic Cylinder Bracket and the Bracket Holder welded to the Wheel Axle (Item 36, Plate 2) to make the harrow lift higher in the transport position.

Adjustment for Disc Angle

The disc angle is changed by removing the ¾" x 5½" bolts behind

each Gang Frame (Items 12 & 17, Plate 1) and shifting the outside ends of each Gang Frame forward or rearward until the desired amount of angle is obtained. Reinsert the bolts behind each Gang Frame and tighten. Always have the same amount of angle in both Front Gang Assemblies and the same amount of angle in both Rear Gang Assemblies.

Adjusting for Balk

Loosen the U-Bolts holding the Bearing Connectors (Item 5, Plate 4) and the Scraper Bars (Items 45-46, Plate 3) onto the Front Gang Frames (Item 17, Plate 1) and move all front Disc Gang Assemblies (Plate 4) in toward the center until the inside discs are touching. Make sure all U-Bolts are moved the same distance toward the center before tightening.

Adjusting for Ridging or Furrowing

Loosen the U-Bolts holding the Bearing Connectors (Item 5, Plate 4) and the Scraper Bars (Items 45-46, Plate 3) onto the Rear Gang Frames (Item 12, Plate 1) and move all rear Disc Gang Assemblies (Plate 4) out if the harrow is ridging and in if the harrow is not filling up the furrow left by the center of the front gangs. Make sure that all U-Bolts are moved the same distance toward or away from the center of the harrow. The speed that the harrow is to be pulled will affect these adjustments; therefore, adjustments should be made for the speed that the harrow will normally be pulled.

Lubrication

The Ball Bearings (Item 16, Plate 4) used in the Disc Gang Assemblies (Plate 4) are triple-sealed, permanently lubricated and require no lubrication or maintenance. The Bearings (Items 7 & 9, Plate 5) used in the Wheel Hub Assemblies (Plate 5) are packed with grease at the factory prior to shipment. These bearings should be checked and adjusted periodically and repacked with grease. They

should receive the same maintenance treatment as the front wheel bearings on a tractor. The harrow should be greased at all Alemite fittings as often as necessary to insure ease of operation and long life of the working parts.

Transporting Harrow

When transporting the harrow at transport speeds always have the Wing Assemblies folded over on top of the basic harrow. Remove the

two 1/4" Nuts securing the Wing Gang Frames (Items 1 & 5, Plate 1) to the Gang Frames (Items 12 & 17, Plate 1) of the basic harrow. Fold the Wing Assemblies over the Gang Frames until they are resting on the Bumpers (Item 4, Plate 1). If the Wing Assemblies are hard to lift and fold over, increase the tension in the Extension Springs (Item 3, Plate 1), see paragraph No. 3 in the Setting-Up Instructions under Wing Assembly. When operating the harrow with the Wing Assemblies down always secure them to the Gang Frames with the nuts provided.

Taylor Implement Manufacturing Company
MANUFACTURERS
TRACTOR DRAWN ***Taylor-Way*** IMPLEMENTS
REG. U. S. PAT. OFF.
ATHENS, TENNESSEE 37303—TELEPHONE (AREA CODE 615) 745-3110