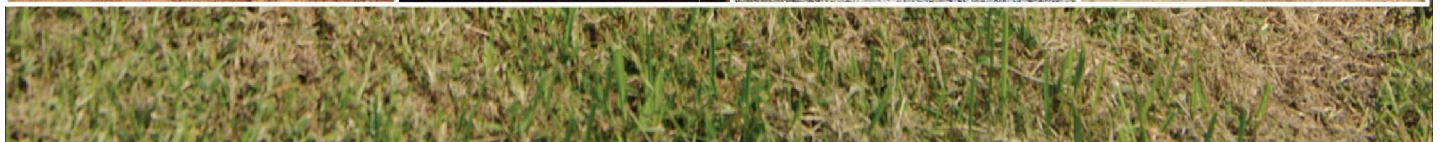




Quality





Model shown: BB-72

Quality Landscape Equipment

Quality is an important word at King Kutter. It's who we are. It's what we do. It's the equipment we build. Landscapers, Nursery Owners, Farmers, and Homeowners can get the job done fast, and do a job they can be proud of with Landscape Equipment from King Kutter.

Landscape your property, build and maintain roads, or move piles of dirt with King Kutter Landscaping Equipment. King Kutter Box Blades, Landscape Rakes, and Dirt Scoops are designed, built, and manufactured to last. We have four styles of Box Blades including the standard BB Series, the Professional and Hinged Back models, and the XB Sub-Compact unit. King Kutter also has four styles of Landscape Rakes. The standard YR series, the Tubular Framed models, which feature our patented kickstand, a Professional series, and the XB Sub-Compact model designed specifically for Sub-Compact tractors. Dirt Scoops round out the line, and we feature two series of them. The Standard DS and the XB Sub-Compact model. So whether you're building a flower bed, or fixing the potholes in your driveway, King Kutter has the tool for you.



All Welded Construction on Hinged Back Box Blades



Individually Mounted Spring Steel Tines



Tubular Framed Landscape Rakes



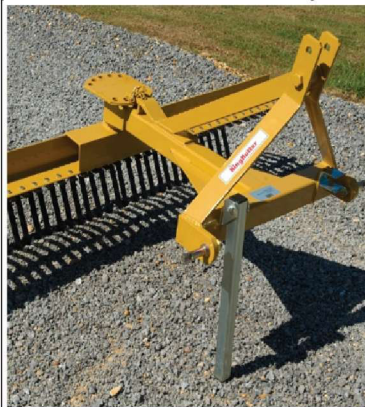
Model shown: TYR-72

King Kutter's Tubular Framed Landscape Rakes are designed with a Cat. I quick hitch compatible hitch, great for professional landscapers, farmers, and homeowners alike. The standard kickstand makes it quick and easy to hookup to a Cat. I quick hitch or standard 3-pt hitch.

Choose from three sizes:

60", 72" & 84" Landscape Rakes - Cat. I, 3-pt hitch, reinforced tubular frame, individual mounted heat treated spring steel tines, 4" x 4" angle beam tine frame, 5 forward and reverse angle settings. (Models: TYR-60, TYR-72, & TYR-84)

QuickHitch
Compatible



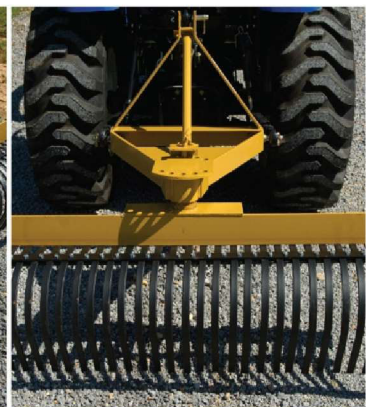
Fold Down Kick Stand



Tubular Frame with Gussets



Angle Iron Frame



5 Forward & Reverse Positions

Landscape Rakes



Model shown: YR-72

King Kutter's Landscape Rakes are designed for versatility for the homeowner, farmer, or professional landscaper. They are great for gravel road or driveway maintenance, seed bed preparation, or loose root, limb, and rock removal from pastures and lawns. The unique stabilizer bar allows the operator to determine the rigidity of the tines depending on the job at hand.

Choose from four sizes:

60", 72", 84" & 96" Landscape Rakes - Cat. I, 3-pt hitch, reinforced angle iron frame, individual mounted heat treated spring steel tines, 4" x 4" angle beam tine frame, five forward and reverse angle settings. (Models: YR-60, YR-72, YR-84, & YR-96)



Professional Landscape Rakes

Model shown: YR-G-72



King Kutter's Professional Landscape Rakes are ideal for professional contractors and farmers for those demanding jobs where just not any tool will do. The industrial tube frame with cat. I quick hitch compatible hitch is ideal for use with most cat. I quick hitch systems. So, whether you are removing debris before laying sod, or renovating a driveway, this tool is ideal for you.

Choose from four sizes:

60", 72", 84" & 96" Professional Landscape Rakes - Cat. I, 3-pt. quick hitch compatible, industrial tube frame, individual mounted heat treated spring steel tines, 4" x 4" angle beam tine frame, five forward and reverse angle settings.

(Models: YR-G-60, YR-G-72, YR-G-84, & YR-G-96)

QuickHitch
Compatible 



Easy Angle Adjustment



Heat Treated Spring Steel Tines

Reversible Dirt Scoops

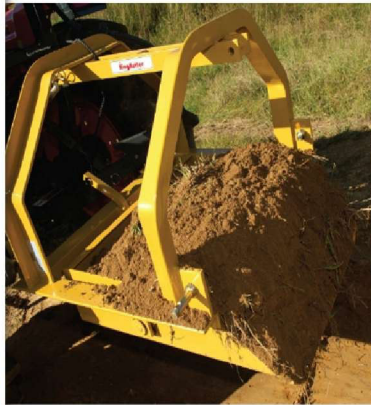


Model shown: DS-30

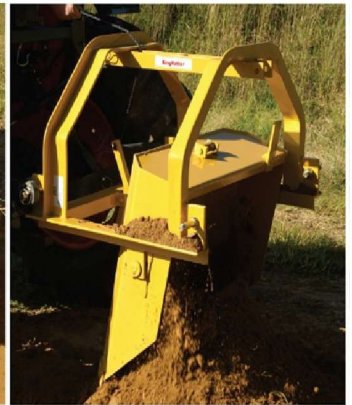
King Kutter's Reversible Dirt Scoops are a great tool for moving and transporting dirt and material. The reversible mounting allows you to attach your tractor to the front or the rear of the scoop. The self-leveling pan and trip dump feature allow you to dump and reset the pan without leaving the operator seat.

Model type:

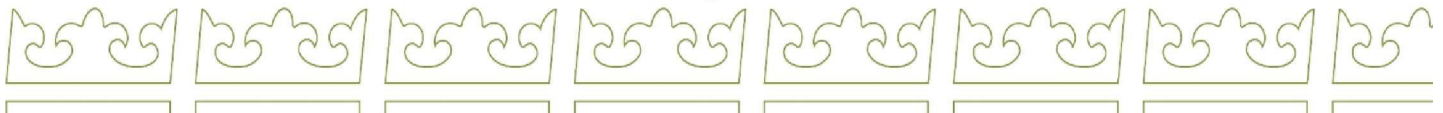
24" & 30" Reversible Dirt Scoops – Cat. I, 3-pt. hitch, self-leveling pan, beveled cutting edge. (Model: DS-30)



Move Dirt



Dump Dirt



Sub-Compact Landscape Rakes



Model shown: TYR-60-XB

Sub-Compact XB Reversible Dirt Scoops



Model shown: DS-24-XB



King Kutter's XB Landscape Rake is designed with a limited cat. I 3-pt. hitch for use with today's sub-compact tractors up to 25 HP. This tool is ideal for homeowners who want to maintain their property or driveway and expect to have all of the features of a larger landscape rake, in a sub-compact package.

Model type:

60" XB Sub-Compact Landscape Rake – Limited Cat. I, 3-pt. hitch reinforced tube frame, individual mounted heat treated spring steel teeth, five forward and reverse angle settings.

(Model: TYR-60-XB)

King Kutter's XB Reversible Dirt Scoop is designed specifically for today's sub-compact tractors up to 25HP. Forward or reverse mount capabilities make this a versatile tool for moving dirt and debris.

Model type:

24" XB Reversible Dirt Scoop - Limited Cat. I, 3-pt. hitch, self-leveling pan, beveled cutting edge.

(Model: DS-24-XB)



Reinforced Tube Frame



Spring Steel Teeth



Trip Lever Dump



Angle Frame Construction





Model shown: BB-72

King Kutter's Box Blades are proven performers in the field. They are great for homeowners, farmers, and landscapers. Whether you're building a road, grading a yard for sod or grass seeding, or just moving dirt, a King Kutter Box Blade will help you get the job done for years to come.

Choose from seven sizes:

42" - 96" Box Blades - Cat. I quick hitch compatible 3-pt. hitch, replaceable ripper teeth, formed self cleaning moldboard, replaceable cutting edges (front & rear), 4"x4" square box shank housing. (Models: BB - 42, BB - 48, BB - 60, BB - 66, BB - 72, BB - 84, & BB - 96)



Quick Hitch
Compatible



Dual Reversible Cutting Edges



Four Position Ripper Shanks

Heavy Duty End Plates



Professional & Hinged Back Box Blades



Model shown: BB-G-72

XB Sub-Compact Box Blade



Model shown: BB-48-XB



King Kutter's Professional & Hinged Back Box Blades are designed with heavy duty, all welded construction, and Cat. I quick hitch compatible hitch, making them some of the most versatile box blades on the market today. The Hinged Back Box Blades also have a hinged rear cutting edge, which allows for deeper penetration. Get the job done quick and get the job done right with King Kutter Professional and Hinged Back Box Blades*.

Choose from seven sizes:

48" – 96" – Heavy, all welded, Cat. I quick hitch compatible 3-pt. hitch, replaceable ripper teeth, replaceable cutting edges (front & rear), 4" x 4" square box shank housing, clevis-type lower hitch brackets.
(Models: BB-G-48, BB-G-54, BB-G-60, BB-G-66, BB-G-72, BB-G-84, BB-G-96, H-BB-60, H-BB-72, H-BB-84, & H-BB-96)

*Hinged Back models have a hinged rear cutting edge.

King Kutter's XB Sub-Compact Box Blade has all of the features you'd expect from a standard box blade, in a sub-compact package. They are great for landscaping, back filling, land leveling, or dirt work. Farmers, homeowners, and landscape professionals will all be happy with an XB Sub-Compact Box Blade from King Kutter.

Model type:

48" XB Sub-Compact Box Blade – Limited Cat. I, 3-pt. hitch, 2" x 4" box tube shank frame, Four position shanks, replaceable cutting edges (front & rear)
(Model: BB-48-XB)

QuickHitch
Compatible



Hinged Back Box Blade



Welded 3-pt Straddle Hitch



Four Position Shanks



Two Reversible Cutting Edges



Landscape Equipment Specifications

Model	YR-60 / YR-72	YR-84 / YR-96	TYR-60 / TYR-72 / TYR-84	YR-G-60 / YR-G-72	YR-G-84 / YR-G-96	TYR-60-XB
HP Range	17 - 40	25 - 50	17 - 50	17 - 50	25 - 50	Up to 25
Working Width	60" / 72"	84" / 96"	60" / 72" / 84"	60" / 72"	84" / 96"	60"
Rake Height	15"	15"	15"	15"	15"	10"
Approx. Weight	229 lbs. / 248 lbs.	263 lbs. / 288 lbs.	218 lbs. / 250 lbs. / 271 lbs.	223 lbs. / 239 lbs.	265 lbs. / 290 lbs.	191 lbs.
Performance						
Rake Angle	5 for. & 5 rev.	5 for. & 5 rev.	5 for. & 5 rev.	5 for. & 5 rev.	5 for. & 5 rev.	5 for. & 5 rev.
Tooth Spacing	1"	1"	1"	1"	1"	1"
No. of Teeth	30 / 36	42 / 48	30 / 36 / 42	30 / 36	42 / 48	30
Construction						
Frame	Flat & angle steel	Flat & angle steel	Reinforced tube	Ind. Tube	Ind. Tube	reinforced tube
Hitch	Cat. I	Cat. I	Cat. I	Cat. I	Cat. I	Limited Cat. I
Quick Hitch Compatible	No	No	Yes	Yes	Yes	No
Rake Tooth Frame	Angle	Angle	Angle	Angle	Angle	Angle
Tooth Size	5/16" x 1"	5/16" x 1"	5/16" x 1"	5/16" x 1"	5/16" x 1"	5/16" x 1"
Tooth Composition	High Carbon Spring Steel	High Carbon Spring Steel	High Carbon Spring Steel	High Carbon Spring Steel	High Carbon Spring Steel	High Carbon Spring Steel
Single Tooth Mount	Yes	Yes	Yes	Yes	Yes	Yes
Gauge Wheels	Opt.	Opt.	Opt.	Opt.	Opt.	Not avail.

Model	BB-42 / BB-48 / BB-60	BB-66 / BB-72	BB-84 / BB-96	BB-48-XB	BB-G-48 / BB-G-54	BB-G-60 / BB-G-66 / BB-G-72
HP Range	17 - 35	25 - 45	25 - 45	Up to 25 HP	25 - 50	25 - 50
Approx. Weight	336 lbs. / 372 lbs. / 441 lbs.	471 lbs. / 500 lbs.	550 lbs. / 604 lbs.	292 lbs.	384 lbs. / 418 lbs.	447 lbs. / 479 lbs. / 510 lbs.
Performance						
Working Width	42" / 48" / 60"	66" / 72"	84" / 96"	48"	48" / 54"	60" / 66" / 72"
No. of Scarifier Shanks	3 / 4 / 5	5 / 6	6 / 7	4	3 / 4 / 4	5 / 5 / 6
No. of Depth Positions	4	4	4	4	4	4
Shank points	Replaceable	Replaceable	Replaceable	Replaceable	Replaceable	Replaceable
Construction						
Cutting edge	(2) 1/2" x 6"	(2) 1/2" x 6"	(2) 1/2" x 6"	(2) 1/2" x 6"	(2) 1/2" x 6"	(2) 1/2" x 6"
Cutting edge construction	(2) Rev. double bevel	(2) Rev. double bevel	(2) Rev. double bevel	(2) Rev. double bevel	(2) Rev. double bevel	(2) Rev. double bevel
Hitch	Cat. I	Cat. I	Cat. I	Limited Cat. I	Cat. I	Cat. I
End plate thickness	1/4"	1/4"	1/4"	1/4"	1/4"	1/4"
Moldboard height	17 1/2"	17 1/2"	17 1/2"	15"	17 1/2"	17 1/2"
Shank, Main Frame	1/4" x 4" x 4"	1/4" x 4" x 4"	1/4" x 4" x 4"	2" x 4" box tubing	1/4" x 4" x 4"	1/4" x 4" x 4"
Lower Hitch Links	Pin	Pin	Pin	Pin	Clevis type	Clevis type
Quick Hitch Compatible	Yes	Yes	Yes	No	Yes	Yes
Box Length	24"	24"	24"	20"	24"	24"
Box Height	17"	17"	17"	15"	17"	17"
Hitch Frame	1/2" bar w/ brace arms	1/2" bar w/ brace arms	1/2" bar w/ brace arms	Straps with bracing	3/8" Plate w/ bracing	3/8" Plate w/ bracing

Model	BB-G-84 / BB-G-96	H-BB-60 / H-BB-72	H-BB-84 / H-BB-96
HP Range	25 - 50	25 - 50	25 - 50
Approx. Weight	573 lbs. / 670 lbs.	502 lbs. / 565 lbs.	622 lbs. / 685 lbs.
Performance			
Working Width	84" / 96"	60" / 72"	84" / 96"
No. of Scarifier Shanks	6 / 7	5 / 6	6 / 7
No. of Depth Positions	4	4	4
Shank points	Replaceable	Replaceable	Replaceable
Construction			
Cutting edge	(2) 1/2" x 6"	(2) 1/2" x 6"	(2) 1/2" x 6"
Cutting edge construction	(2) Rev. double bevel	(2) Reversible double bevel	(2) Reversible double bevel
Hitch	Cat. I	Cat. I	Cat. I
End plate thickness	1/4"	3/8"	3/8"
Moldboard height	17 1/2"	17 1/2"	17 1/2"
Shank, Main Frame	1/4" x 4" x 4"	1/4" x 4" x 4"	1/4" x 4" x 4"
Lower Hitch Links	Clevis type	Clevis type	Clevis type
Quick Hitch Compatible	Yes	Yes	Yes
Box Length	24"	24"	24"
Box Height	17"	17"	17"
Hitch Frame	3/8" Plate w/ bracing	3/8" Plate w/ bracing	3/8" Plate w/ bracing

Model	DS-30	DS-24-XB
HP Range	17 - 40	Up to 25
Approx. Weight	269 lbs.	227 lbs.
Performance		
Working Width	30"	24"
Approx. capacity	9 cu. Ft.	6 cu. Ft.
Attachment style	Front or Rear	Front or Rear
Dump mechanism	Trip lever	Trip lever
Pan cutting edge	Beveled	Beveled
Construction		
Hitch	Cat. I	Limited Cat. I
Frame	Heavy Duty Angle Iron	Heavy Duty Angle Iron

*specifications also available at www.kingkutter.com

King Kutter Inc.

PO Box 1200

Winfield, AL 35594

205.487.3202

www.kingkutter.com

Quality Rotary Mowers & Farm Equipment

King Kutter, Inc. reserves the right to change model numbers, optional equipment and product specifications without notice.

